

TECHNICAL SHEET

“People what people ?”

* 11 people on tour :

7 dancers - 2 technicians - 1 choréographe - 1 production manager

* Duration of performance : 52 mn without interval

* Lighting Engineer : Vincent TOPPINO : +33(0)6 77 11 64 67 / vtoppino@free.fr

* Sound Engineer : Yoann Sanson : +33 (0)6 71 79 06 44 / ysson@me.com

Since there's no set for this performance the lights and sound are essential ; it is therefore very important to adhere as closely as possible to the list of technical specifications. If there are any difficulties, we can find a compromise or an equivalent solution, and thus maintain optimum conditions for performance.

The presenter is required to supply (at least six weeks before the show) a detailed plan of the performance venue and a list of available equipment, especially if modifications are envisaged.

Electricity

Provide an audio feed separate from the lighting feed, and these to be appropriate for the equipment used (balanced phases), and generating no unwanted interference.

We use electrical equipment conforming to the French standards, using 230 V Alternating current, 16A, 50 Hz, and fitted with type E plugs and sockets. Please supply any necessary adaptors and transformers for the use of this equipment (a minimum of 5 adaptors/transformers).

Schedule / Staff:

At least 2 technical staff for lighting, 1 for audio are required. This should be adapted to the constraints of the performance venue.

Once the set-up is complete, please allow 2 hours and a half for setting lights, 1 hour and a half for sound balance and 3 hours for rehearsals.

STAGE REQUIREMENTS

PERFORMANCE SPACE

- Space between the curtains : 14m (550 inches) - 11,5 m minimum (450 inches)
- Stage depth : 10,5m (410 inches) - 8,5 m (335 inches) minimum.
- Soft flooring with a white dance mat :
 - Width : 12m (472 inches) - mini 9,5m (375 inches)
 - Depth : 10,5m (410 inches) - 8,5 m (335inches) minimum

The stage should be conform to present-day norms.

RAKE: 5% maximum.

CURTAINS : in Black color :

Back drop + the 2 sides « À l'allemande » (side panels)

SUPPLIED BY THE COMPANY:

2 Gobos rotators that can fit inside Juliat profiles.

In case it's not possible to have Juliat profiles, please contact us (ETC S4, Strand SL might also be OK)

INTERCOM: At least one intercom link between the stage and the lighting control room.

Other :

Glow tape (phosphorescent) : for 7 tiny marks on the white dance mat (for the entrance of dancers)

DRESSING ROOM:

Dressing rooms for 8 persons with tables, chairs, mirror and shower.

A table and iron for costumes.

Some water bottles and light Catering (11 persons), the day of show.

In case of series of shows, please provide a costumes cleaning.

AUDIO REQUIREMENTS

Sound Engineer : Yoann Sanson
+33 (0)6 71 79 06 44 / ysson@me.com

Microphones :

- 4x KM184 + 3 short stands.
- 1x speak mike (talk back)

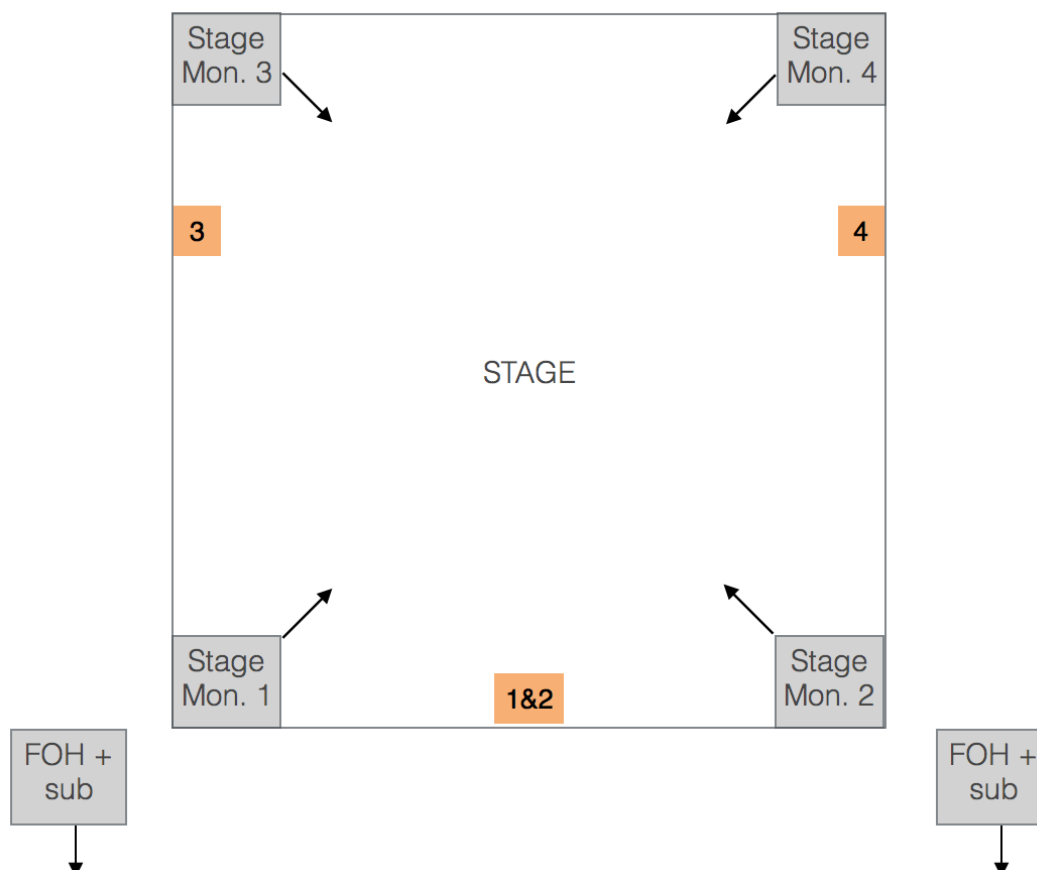
Control : in the auditorium

- numeric sound desk with delay, EQ, Reverb (ipad control is welcome).
- 10 inputs, +48v. , 4 aux post.
- 1 CD player with AutoPause
- audio adaptors according with sound desk :
 - *audio interface (provided by company) = 2 jack TRS
 - *iPhone (supplied by company) = stereo mini-jack
- Allow space for 1 computer and midi controller, as well as a direct 16A connection.

Loudspeakers :

FOH according to the venue.

- 4 stage monitors full range, wedge position, oriented to the center of the stage. Speaker 3&4 play also for the audience, FOH delays adjusted on them.



APPENDED SOUND DESK VENUE SET UP

INPUTS	sources	eq - fx - délais	destination
1	MIC 1	EQ HPF 150Hz	FOH
2	MIC 2	EQ HPF 150Hz	FOH
3	MIC 3	EQ HPF 150Hz + send FX1 (long reverb)	FOH
4	MIC 4	EQ HPF 150Hz + send FX2 (short reverb)	FOH
5	MOTU 1	-	FOH L
6	MOTU 2	-	FOH R
7	MOTU 3	-	MON 1&3
8	MOTU 4	-	MON 2&4
9	CD or iPhone L	-	FOH L + MON 1&3
10	CD or iPhone R	-	FOH R + MON 2&4
Fx1		Réverb 3,5 sec	FOH
Fx2		Réverb 1,3 sec	FOH
OUTPUTS			
BUS 1		DELAY (distance FACE -> RET3&4) ÷ 2	MON 1
BUS 2		DELAY (distance FACE -> RET3&4) ÷ 2	MON 2
BUS 3		-	MON 3
BUS 4		-	MON 4
STE L		DELAY (distance FACE -> RET3&4)	FOH L
STE R		DELAY (distance FACE -> RET3&4)	FOH R

LIGHTING REQUIREMENTS

Lighting Engineer : Vincent TOPPINO :
+33(0)6 77 11 64 67 / vtoppino@free.fr

Please contact the Lighting Engineer if any changes to these requirements are envisaged.

HEIGHT SETTINGS : 8m maximum
(6m minimum on center of the stage – 5,5m minimum for the rest of the stage)

EQUIPMENT SUPPLIED BY THE COMPANY

- Console Mentor ADB (provided by the Company's Lighting Engineer)

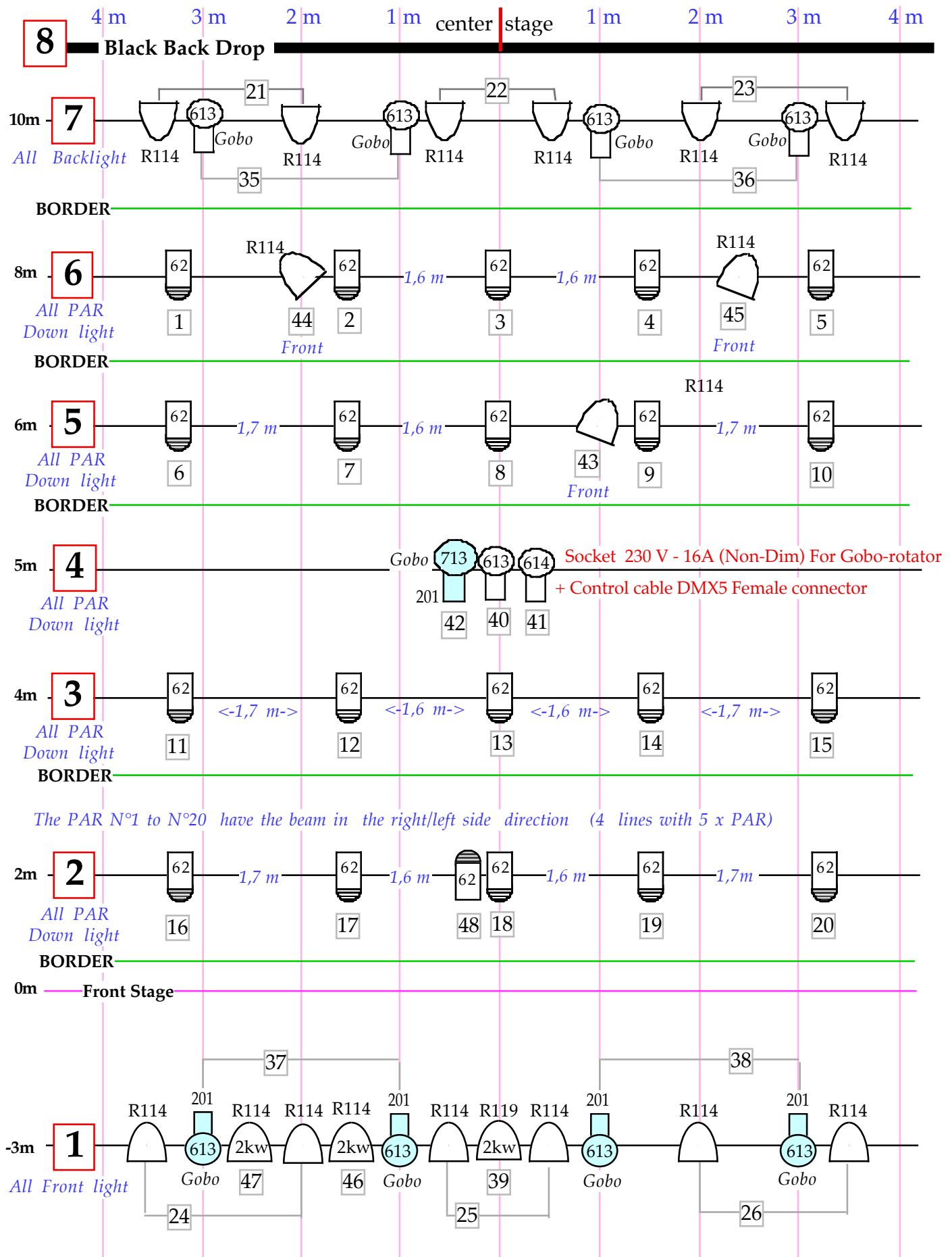
- 9 Glass gobos, square shaped : dimensions 8.5 x 8.5 cm ; thickness varying from 3mm to 7mm (hence the importance of supplying the Robert Juliat SX model requested, to accommodate the gobos, and to maximize the quality of the settings)

2 Gobos rotators Smartmove DMX Appollo that can fit inside Juliat profiles.
In case it's not possible to have Juliat profiles, please contact us (ETC S4, Strand SL might also be OK)

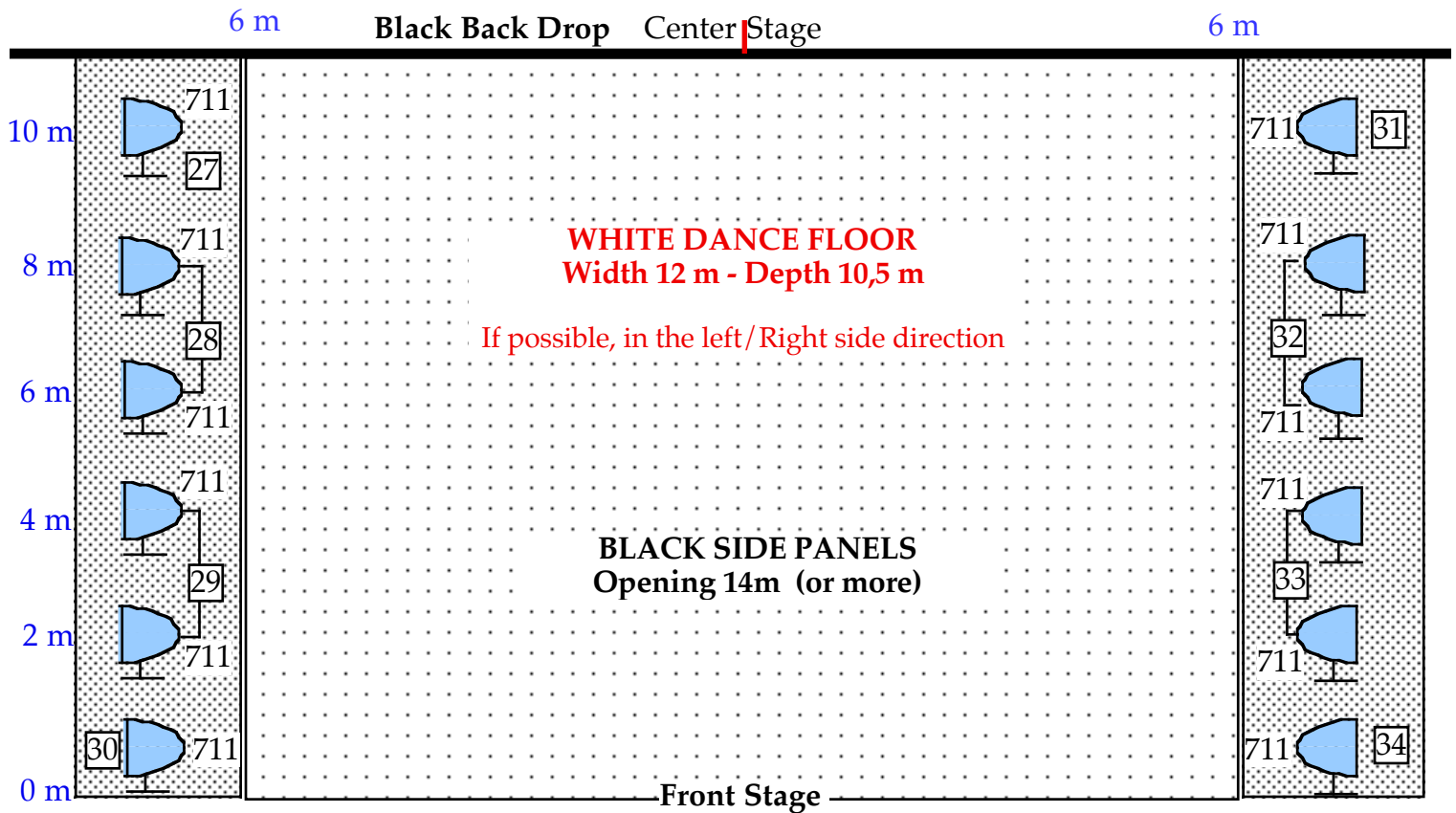
List of filters and projectors : see Lighting plots

Other informations :

- The channels N° 1 to N° 20 must be plugged on dimmer pack of the same mark and same model, in order to avert any problem of electric threshold.
- During the setting, if possible, prepare the PAR N° 1 to N° 20 with the beam in the right/left side direction.
- The focus of the lights will be made on the white dance floor already in place.

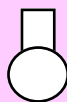


Floor Light plot




The PCs with the floor stand are installed each side of the white dance floor on a dark floor

We Use 9 Glass Gobos - 8,5 x 8,5 squares centimeters - thickness 3mm to 7mm
 We prefer to use Juliat profiles but it's possible to use ETC Source Four profiles
 9 x ETC Source Four Zoom (25°/50°) - 1 x ETC Source Four Zoom (15°/30°)
 For the 2kw Profile, make attention to the opening and to the size of the gobo (8,5 x 8,5 - thickness 3mm)

-  9 x Profile Juliat 613SX 1kW (28°/54°) - 4 x Lee 201
- 1 x Profile Juliat 614SX 1kW (16°/35°)
- 1 x Profile Juliat 713SX 2kW (29°/50°) - 1 x Lee 201


-  21 x PAR 1kW 220V CP62

-  27 x PC 1kW - 12 x Lee 711 / 15 x R114
- 3 x PC 2kW - 2 x R114 / 1 x R119

 12 x Floor Stand

711 = N° Lee Filter

R114 = N° Rosco Filter

 = N° channel

Vilcanota Company supplies :
 2 x Gobo Rotator Smartmove - adapted for Profile Juliat SX
 Using on the profiles N° 40 and N°41 with a socket 230V -16A non-dim and a Control cable DMX5.

48 CHANNELS 2kw + Audience lighting

If we travel by train , we use our own lighting board - Mentor ADB (DMX5)
If we travel by plane, we need a light board with crossfade and 12 submasters

